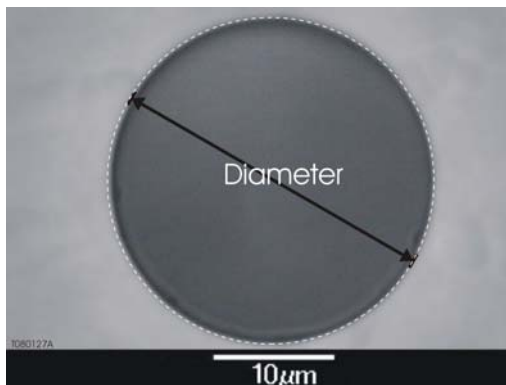
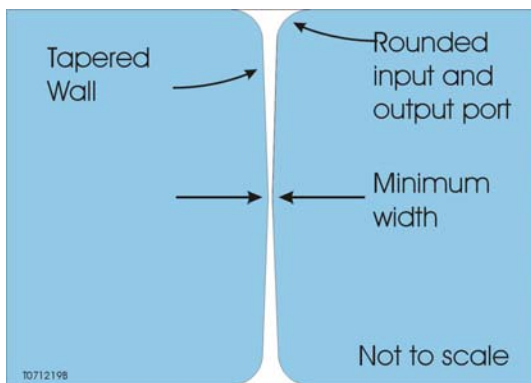


Selecting the Appropriate Diameter

Remember that Translume apertures are based on soft aperturing. This helps reduce plasma formation around the mouth of the aperture when used with high-energy and high-power lasers. The diameter listed is the minimum width (i.e. width measured at the waist of the tapered pinhole). The diameter tolerancing and circularity are also specified at the waist location.



Diameter (micron)	Diameter tolerancing (micron)	Circularity (micron)
5	± 2	± 0.5
10	± 2	± 0.5
15	± 2	± 0.5
20	± 2	± 1
25	± 2	± 1
30	± 2	± 1
50	± 5	± 2
100	± 10	± 2

Substrate thickness: 250 ± 50 micron

Wall taper: 2-5° full angle

© 2009 Translume Inc.

655 Phoenix Drive

Ann Arbor, MI 48108

Phone: 800-378-3505

Phone: 734-528-6371

Fax: 734-528-6334